



Swank K-12 Streaming:

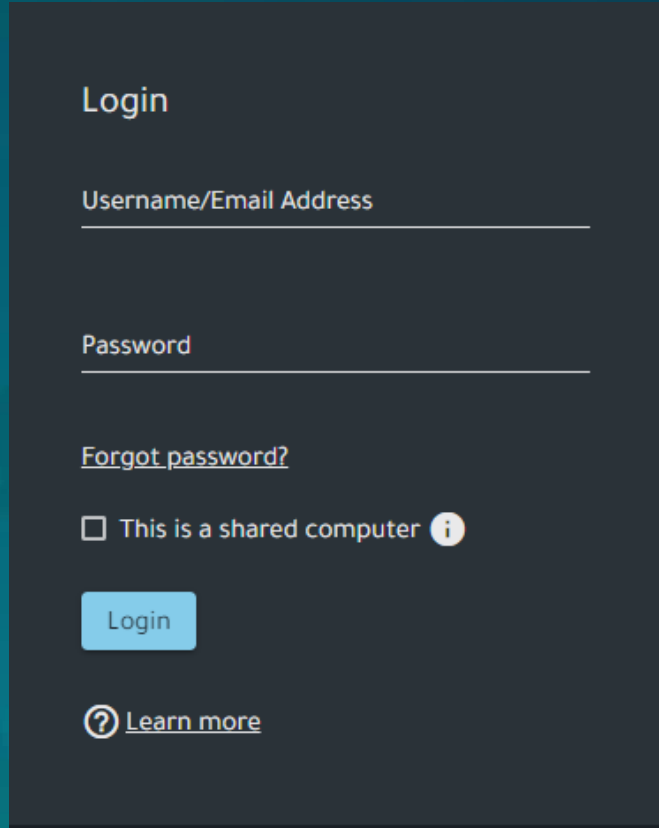
Teacher Guide

Single Sign On

Access your Swank K-12 Streaming portal at the URL provided by your administrator.

If your school is configured for single sign on, you will automatically be taken to your school's network log in. Log in using your school network credentials and you will be granted access to the streaming platform.

Username/Password



The screenshot shows a dark-themed login interface. At the top, the word "Login" is displayed. Below it are two input fields: "Username/Email Address" and "Password". A link for "Forgot password?" is positioned below the password field. A checkbox labeled "This is a shared computer" with an information icon is located below the links. A blue "Login" button is centered below the checkbox. At the bottom, there is a link with a question mark icon labeled "Learn more".

If you see this log in screen, you will need to enter the username and password provided by your streaming administrator.

Note: For Username/Password authentication, you are able to customize your username and/or password by clicking **Profile** on the menu.

However, this should not be customized if the username is generic to your school and not unique to you personally as it will lock all other teachers out of the system.

Browsing Movies

Licensed Content:

Access all of the films currently licensed, and immediately available at your school.

Swank Catalog:

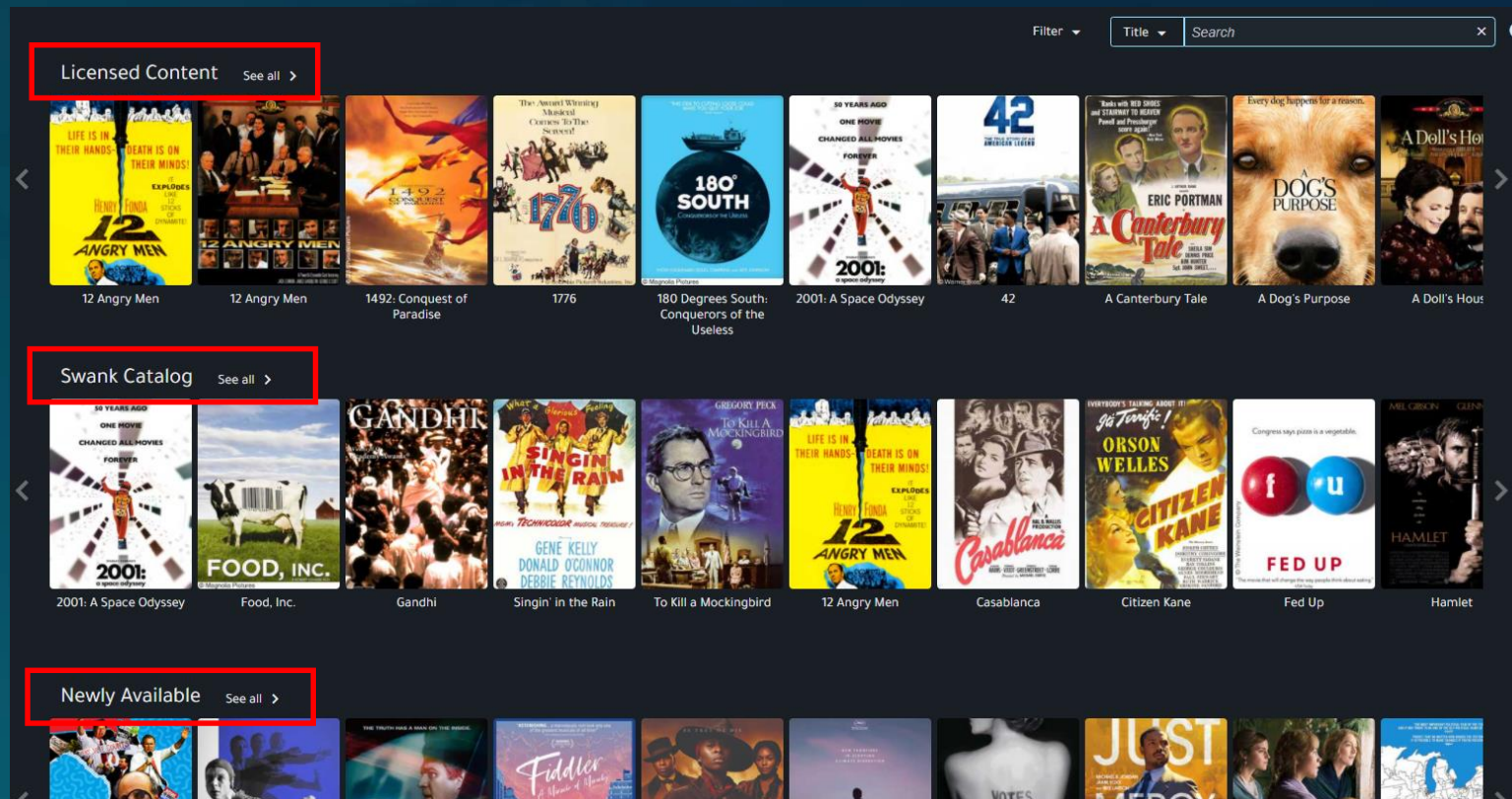
Browse the entire Swank library of films available for either immediate viewing or upon request as indicated.

Newly Available:

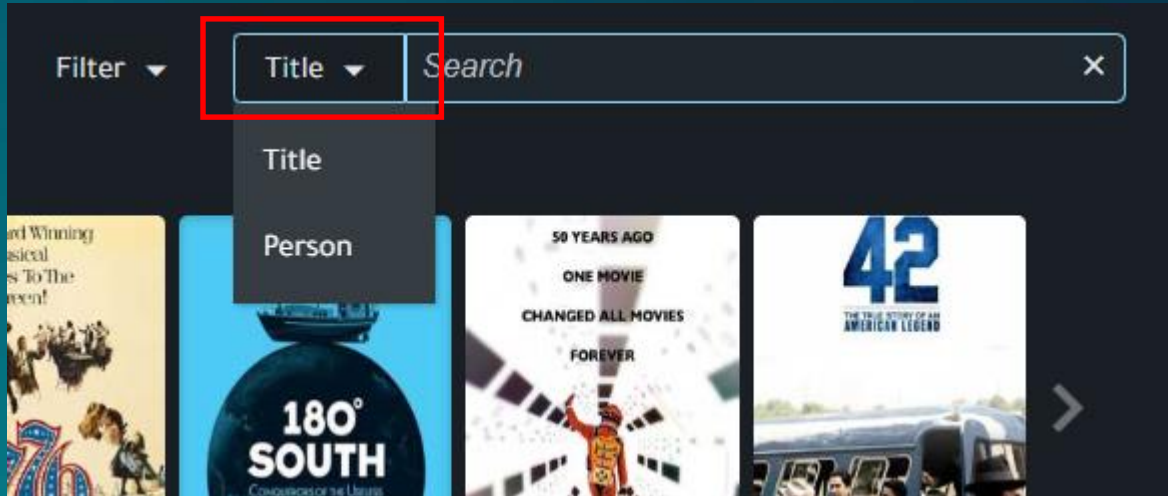
Highlights either new release films or new rights that we have acquired that are now available upon request.

Content Spotlight:

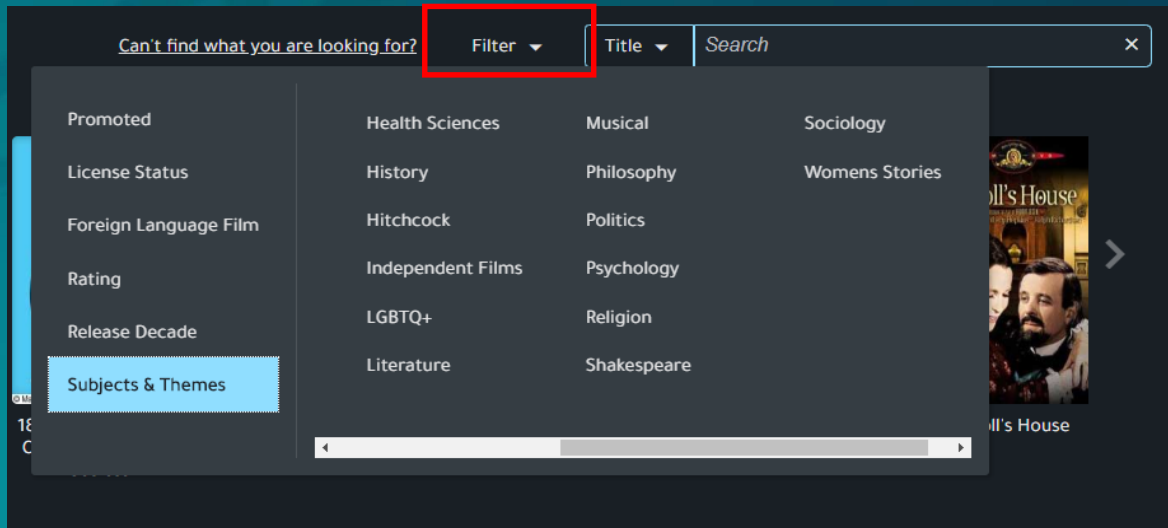
Lists films that are currently trending from other schools related to either current topics or specific times of year.



Searching Movies



Search by either movie title or person
(actor/director)



Further narrow your search by
filtering by items such as:

- Language
- Rating
- Release Date
- Subjects and Themes

Search Results

The screenshot shows a search results page for the film 'Hamlet'. At the top right is an 'Export to Excel' button. Below it, a table lists search results. The table has columns for Title, Release Year, Rating, and License Status. The first row is highlighted with a red box around the 'License Status' column, which says 'Available through 12/30/2020'. The second row also has 'Available through 12/30/2020'. The third, fourth, and fifth rows have a red box around a 'Request' button in the 'License Status' column. Below the table, there is a detailed view for the 1996 version of 'Hamlet', including a 'Watch' button, a 'Share' dropdown, and a description: 'Kenneth Branagh directed and plays the brooding prince in this version of Shakespeare's play. Julie Christie, Derek Jacobi.'

Title ↑	Release Year	Rating	License Status
Hamlet	1996	PG-13	Available through 12/30/2020
Hamlet	1990	PG	Available through 12/30/2020
Hamlet	2000	R	Request
Hamlet	1969	G	Request
Hamlet	1948	NR	Request

Hamlet [Watch](#) [Share](#) ×

1996 PG-13 CC 4h 2m Available through 12/30/2020 Director Kenneth Branagh

Kenneth Branagh directed and plays the brooding prince in this version of Shakespeare's play. Julie Christie, Derek Jacobi.

Available through:

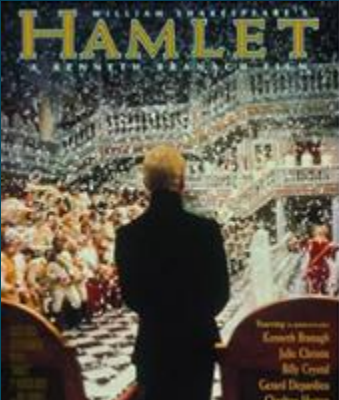
This indicates that this film is currently available for immediate playback through the date provided.

Request:

This film is available in our library but not currently available for immediate playback by your school. You may request that this film be added to your school's library of available titles.

Search Results

Title previews will also indicate your ability to either Watch/Share a film with your class or Request access.

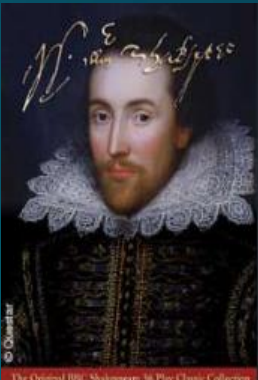


Hamlet

1996 PG-13 4h 2m Available through 12/30/2020

Kenneth Branagh directed and plays the brooding prince in this version of Shakespeare's play. Julie Christie, Derek Jacobi.

Watch Share



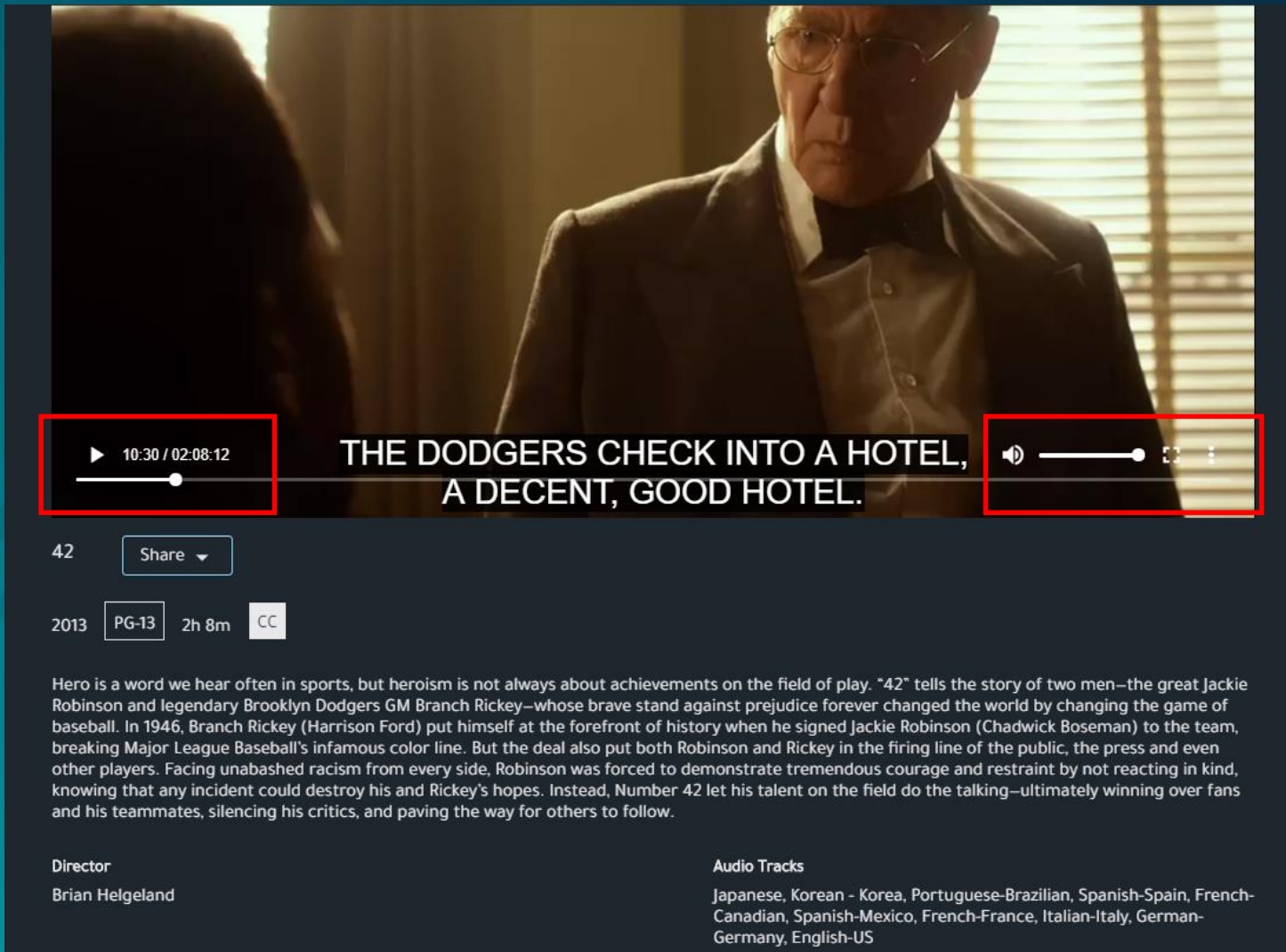
Hamlet -- The Complete BBC Shakespeare Collection

1980 NR 2h 30m

Request

Hamlet, Prince of Denmark, returns home from school in Wittenberg to attend his father's funeral and his mother's quick marriage to his Uncle Claudius. Shortly after his arrival, Hamlet is visited by the ghost of his father who informs him that he was murdered by Claudius. Demanding that Hamlet take action and avenge his murder, Hamlet spends the rest of the play trying to determine his course of action. From displays of madness to a reenactment of the murder by a group of players, Hamlet can never seem to find the right time to seek revenge. Finally when he realizes his own life is about to end, Hamlet murders his uncle.

Playing Movies



Use the **seek bar** to jump to specific parts of a film

The three dot **menu icon** will give you any additional language options available for a movie as well as **Closed Captioning** (English Subtitles).

Tip: Not seeing languages you need for a movie? Let us know as we might be able to secure them for you.

Click on the **box next to volume** on the bottom right **SWANK** to full screen. K-12 STREAMING FILM LIBRARY FOR EDUCATION

Assigning Movies

You can obtain the necessary links for assignment from either the preview page or the watch page of the film.

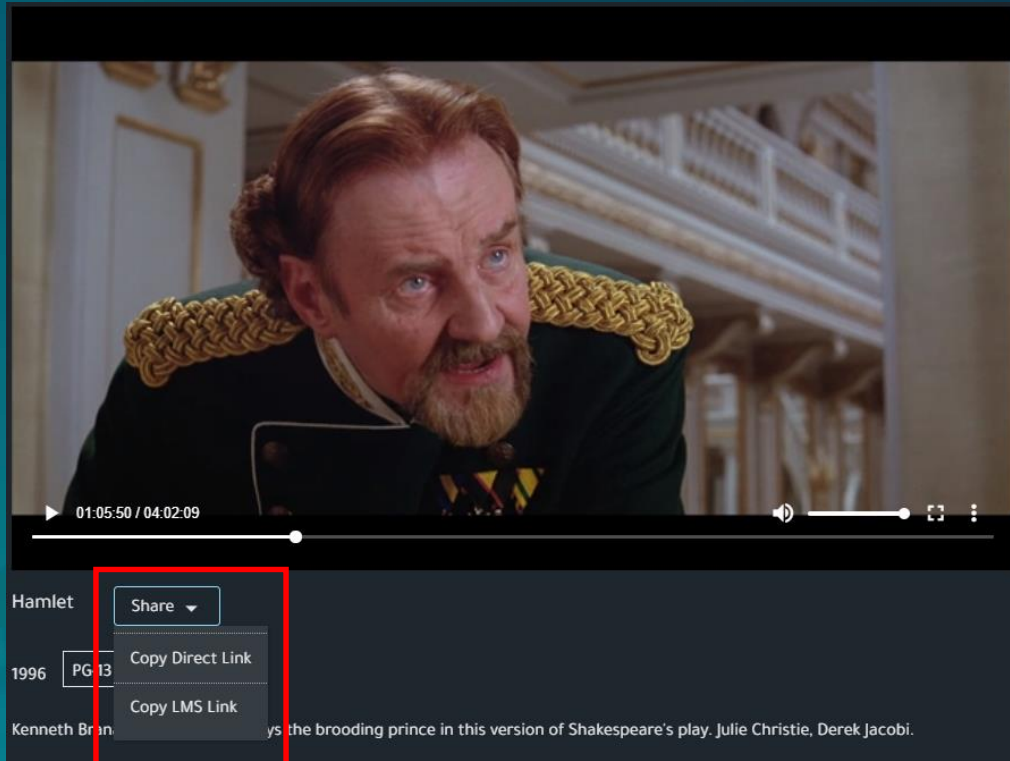
Direct Link:

Copies the full URL to the movie.

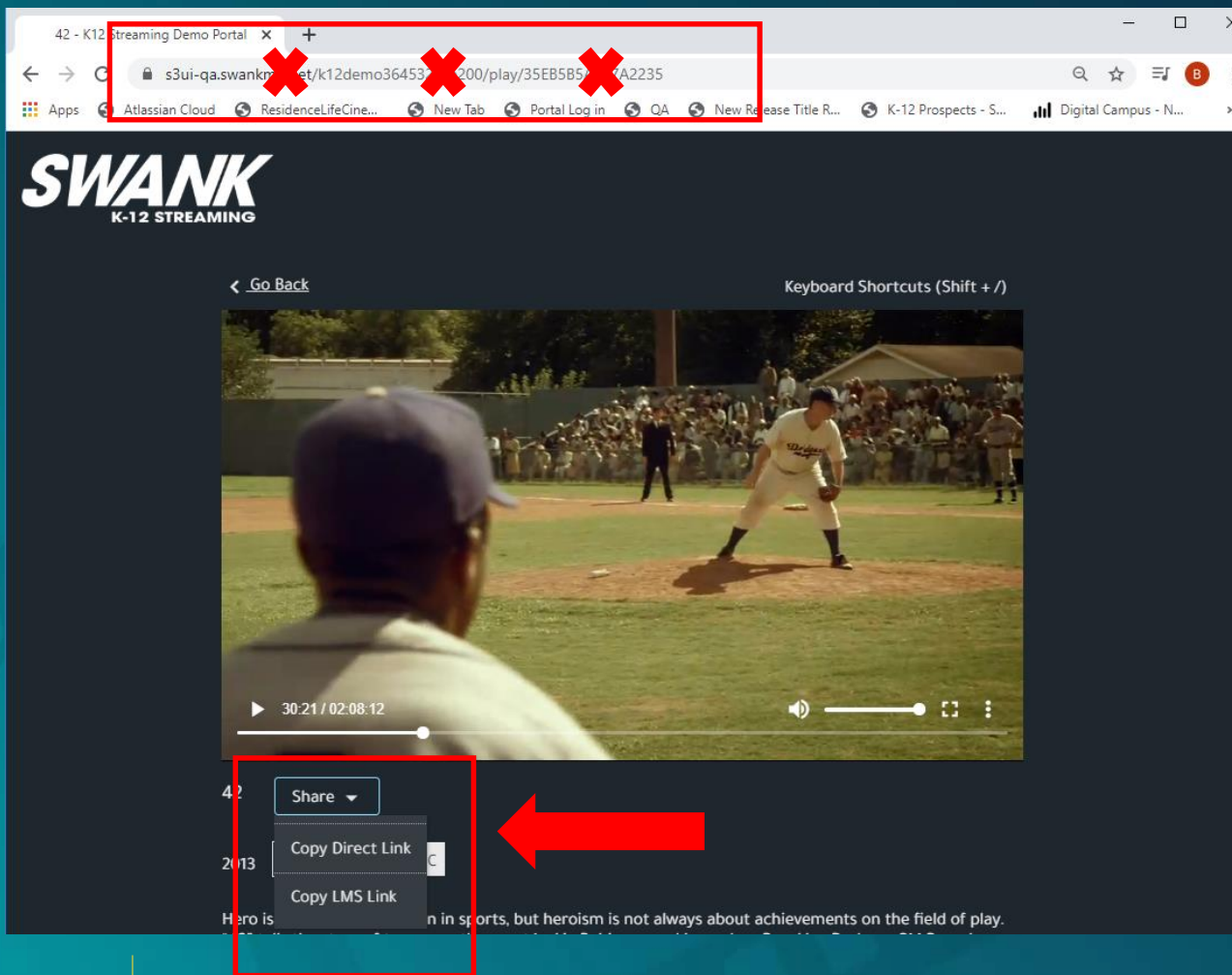
Typically used when sending via email.

LMS Link:

Copies a link that can be embedded into a webpage. Typically used when sharing via LMS such as Google Classroom.



Assigning Movies



It is important to note that **students DO NOT** have the ability to see the entire library of films as you do. Students will only see films they have been assigned by providing them with a **Direct Link** or **LMS link**.

Providing students the main page navigation URL will result in them receiving an error message.

Requesting Movies

Requesting Hamlet - - The Complete BBC Shakespeare Collection

Needed By *

7/15/2020

Course

Academic Use

Please describe how this film will be used.

Description example: "Denial" Students will watch and discuss how the film relates to readings about the various aspects of Holocaust denial as well as its persistence on-line and the impact of Holocaust denial on both survivors and historians.

Request on behalf of

Instructor First Name

Instructor Last Name

Instructor Email

Send

Cancel

Need another title?

Aside from the movies available in your streaming library, your school may request additional titles per year.

After performing any search, films identified with a **"Request"** button are those not currently licensed for your school.

You can click **"Request"** and fill out the form as shown here, and the information will be sent to your school administrator for review.

Note: Once approved, requested films are typically available in your streaming library within 24 hours and will remain available moving forward.